

RØDEHUB

HIGH-PERFORMANCE USB HUB

The RØDE Hub is a premium USB hub that offers a versatile solution for connecting your devices to your computer. It features six USB-C ports and one USB-A port with SuperSpeed connectivity offering up to 10 Gbps data transfer speeds, making it ideal for connecting high-performance devices, including cameras, microphones and storage devices. It also features microSD and SD card readers that support up to UHS-II transfer speeds to facilitate rapid file management. The included power supply allows the RØDE Hub to pass through up to 60W to your laptop and 40W to your connected devices, keeping everything topped up as you work. Sleek, compact and rugged, it is the perfect centrepiece to any creative or professional setup.

- High-performance 100W USB hub
- Six USB-C ports (up to 10Gbps) and one USB-A port (up to 5Gbps)
- SD and microSD card readers (UHS-II speed)
- Up to 60W pass-through charging for laptops and other host devices
- Plug-and-play compatibility with Mac and Windows computers
- Sleek, compact and rugged design



SEVEN USB
PORTS



SUPERSPEED
USB CONNECTIVITY



TWO SD CARD
READERS (UHS-II)



60W POWER
DELIVERY

ELECTRICAL SPECIFICATIONS

USB-C Connections:	6 x USB-C 3.2 Gen 2 (10Gbps / 1.5A)
	1 x USB-C Power Input
	1 x USB-C Port for Host Device
USB-A Connections:	1 x USB-A 3.2 Gen 1 (5Gbps / 0.9A)
SD and microSD Card Reader:	UHS-II (SD 4.0) up to 312MB/s
Power Supply:	100W (via USB-C)

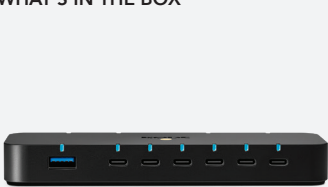


RØDE

MECHANICAL SPECIFICATIONS

Weight (grams):	775 (RØDE Hub)
	321 (Power Supply and Power Cable)
Dimensions (millimetres):	Length: 153.2
	Width: 53.2
	Height: 20.3

WHAT'S IN THE BOX



1 x RØDE Hub



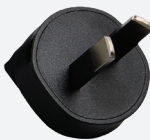
1 x SuperSpeed USB-C to USB-C Cable



1 x Power Supply



1 x Power Delivery Cable



1 x Type I Power Adaptor



1 x Type C Power Adaptor



1 x Type G Power Adaptor

DIMENSIONS

